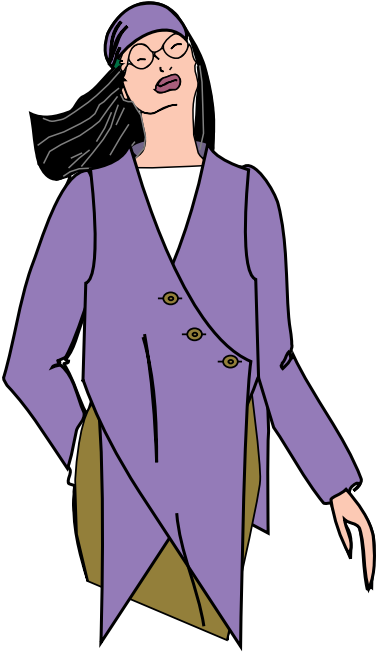




Style Set 2 for Garment Designer

(Abbreviated Illustration Set)



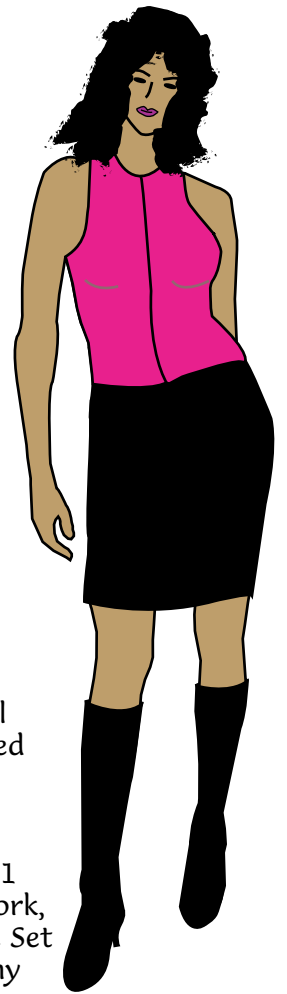
Welcome to Style Set 2.
This set provides you with 50+ additional style elements that will mix and match with the original Garment Designer & Style Set 1 styles .



Key to Style Drawings

Red Lines/Curve: Show you new points involved in the style, plus the segments (either straight or curved) that exist with the style. Use this information to assist you in choosing styles for custom design ideas.

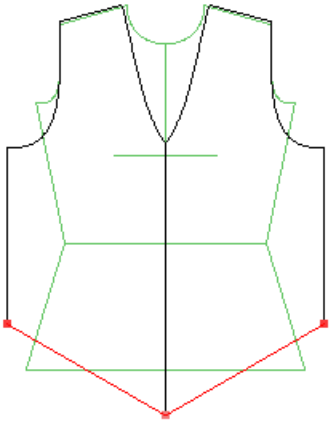
Black/Red Lines: show you the pattern built through the combination of style menus.



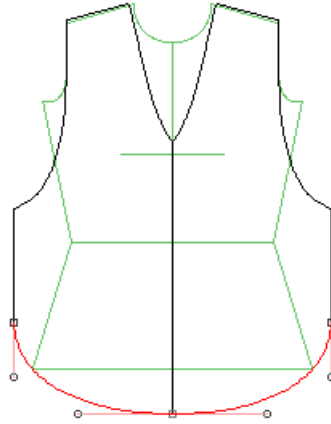
Note:

1. The Style Set 2 installation will update your Garment Designer application file. It will also update your Style Set 1 (SS1) file, should you have SS1 installed. It was decided to narrow some of the V-neckline widths in both SS1 and SS2.
2. It is highly recommended that you only have one copy of Garment Designer on your computer. This will avoid confusing the Installer.
3. With the millions of combinations now available in Garment Designer (with Style Set 1 and Style Set 2), it is likely that there is a style combination that simply cannot work, or doesn't work properly. The fully illustrated booklet that accompanies the Style Set should alert you to known impossibilities. Please contact Cochenille if you have any problems or questions. Contact techsupport@cochenille.com.

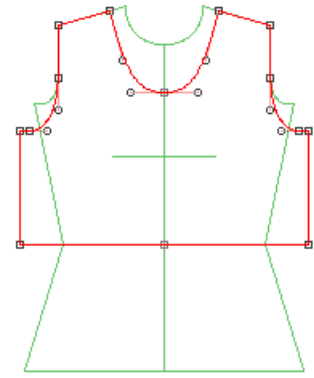
Style Set 2 Basic Tops



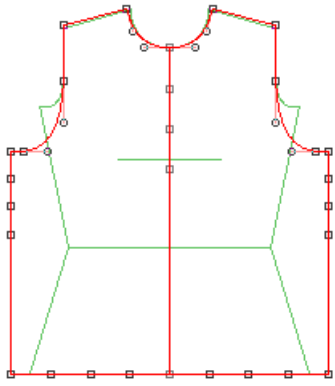
Tip Center Angle



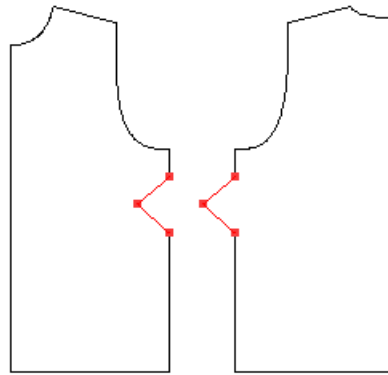
Tip Center Curve



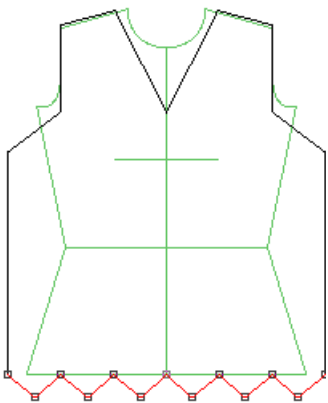
Fitted Waist-Length



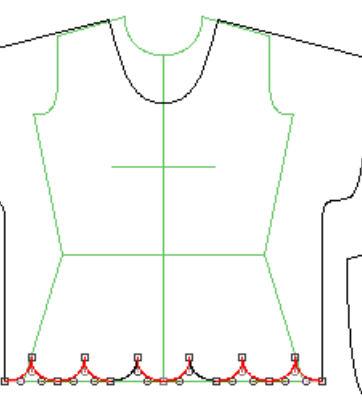
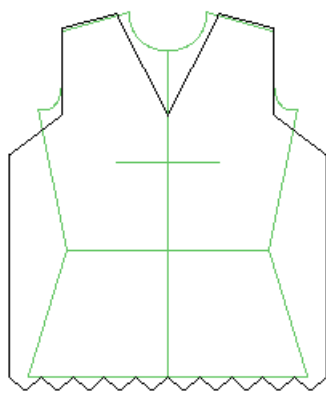
Average with more points



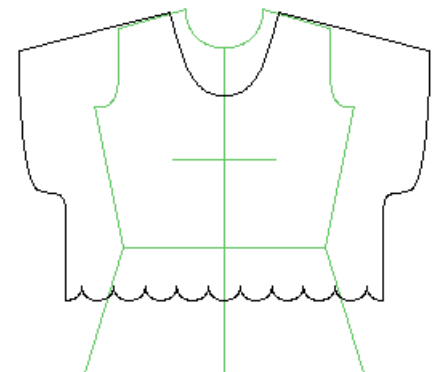
using give/take symmetry



Angled Scallop Hem

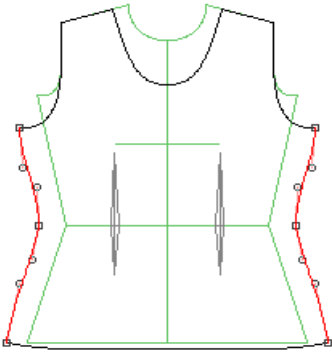


Round Scallop Hem

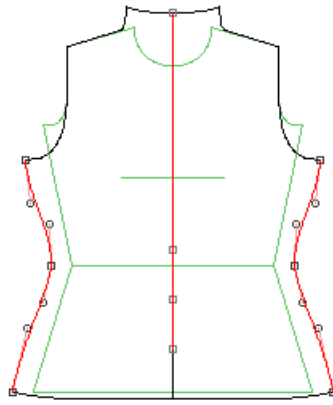


shortened slightly

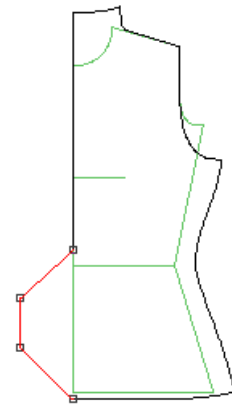
Style Set 2 Contoured Tops



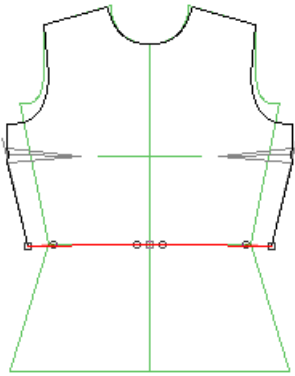
Semi-Fitted 2 Curve Side



Semi-Fitted 2 Curve Side More Points

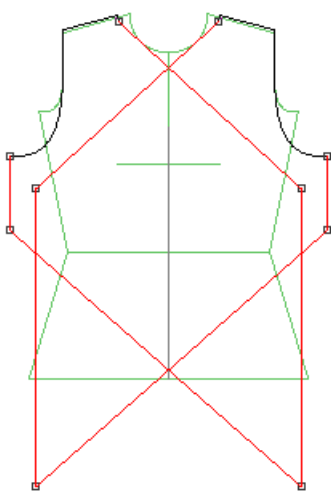


utilizing the added points at center

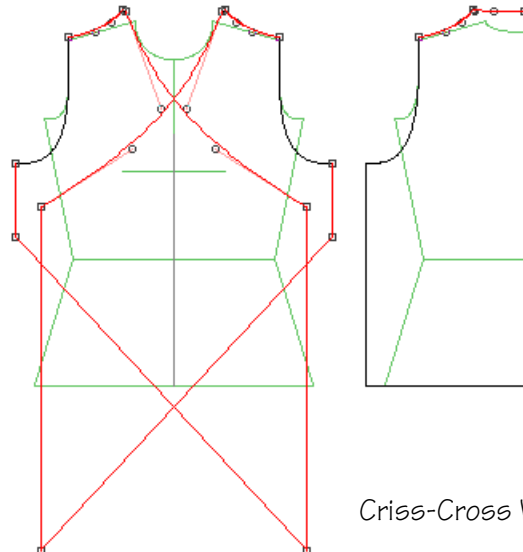
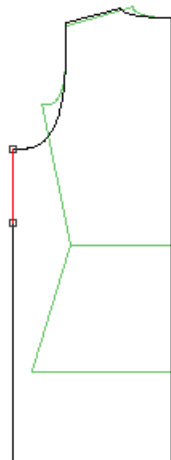


Waist-Length Fitted

Body-Neck Combo

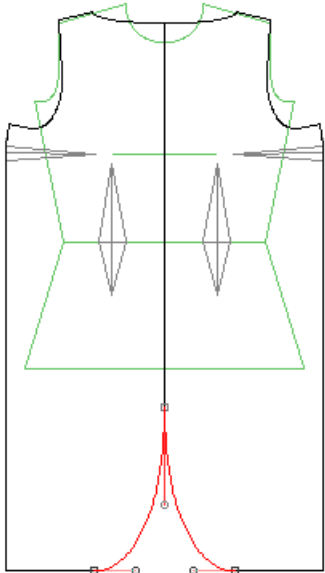


Criss-Cross Wrap1

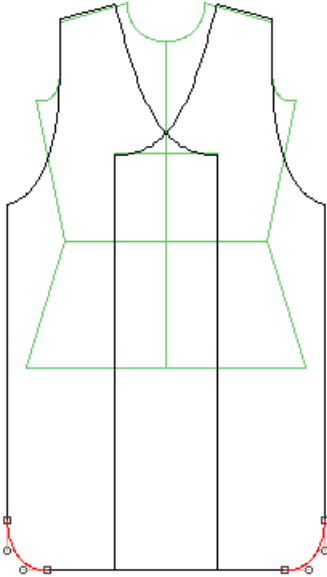


Criss-Cross Wrap2

Style Set 2 Basic Dresses

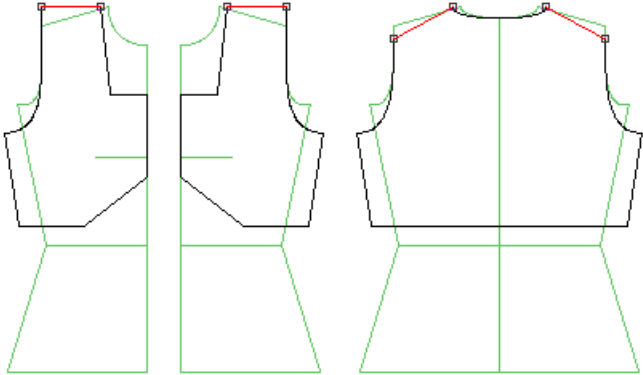


Center Round Hem



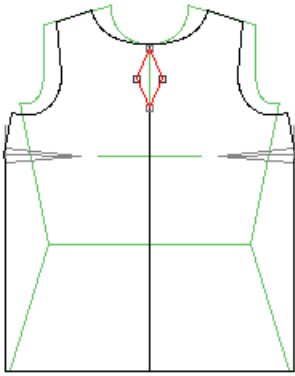
Side Round Hem

Shoulder

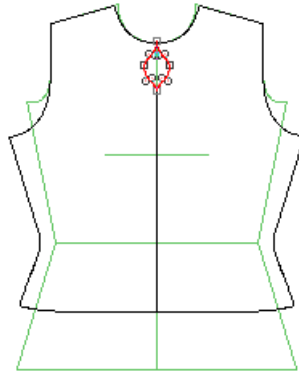


AngleBack

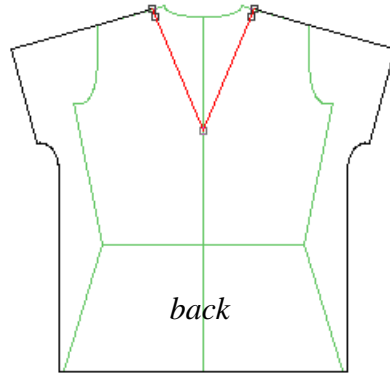
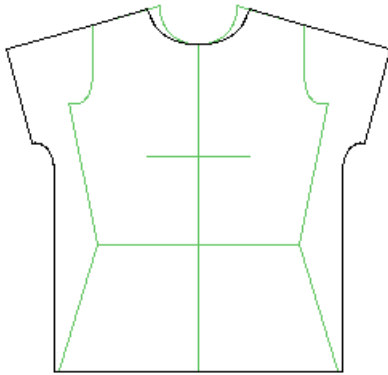
Style Set 2 Necklines



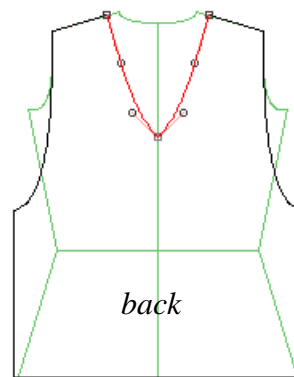
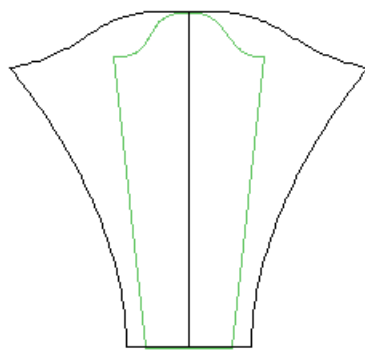
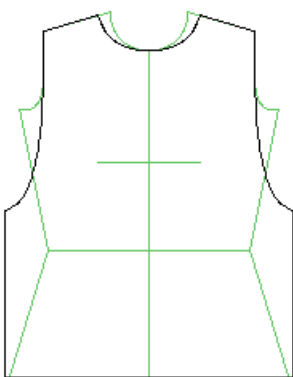
Neck Group: Round
Neck Style: Keyhole1



Neck Group: Round
Neck Style: Keyhole2

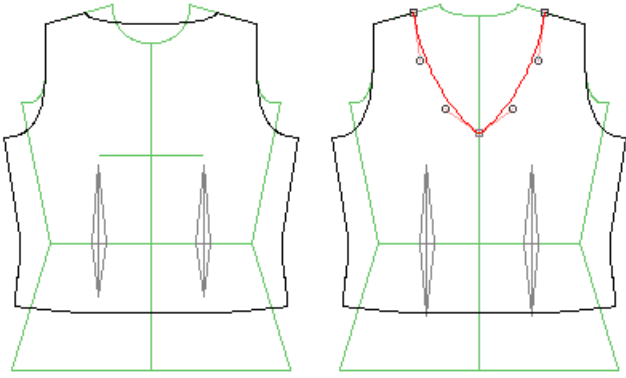


Neck Group: V
Neck Style: V-Back

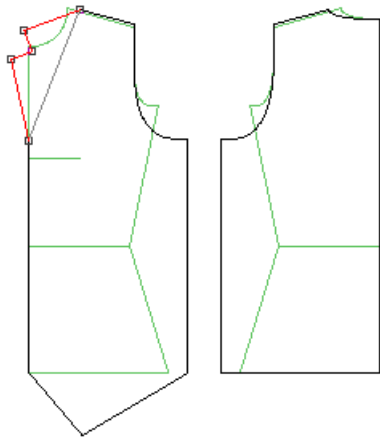


Neck Group: V
Neck Style: V-Back Curved

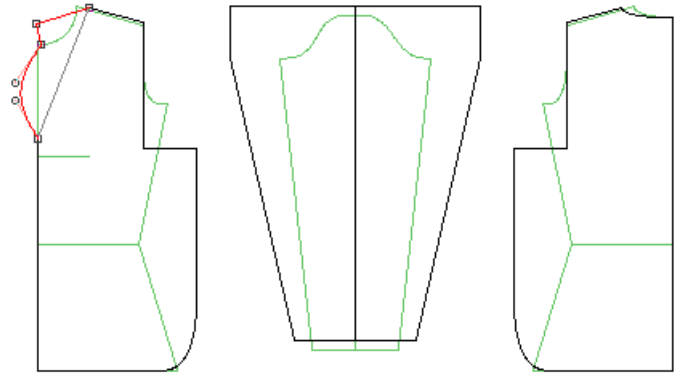
Style Set 2 Necklines, continued



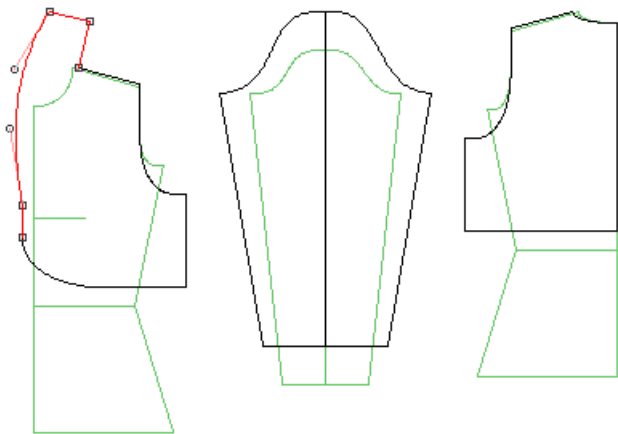
Neck Group: Boat
Neck Style: Modified with V-Back



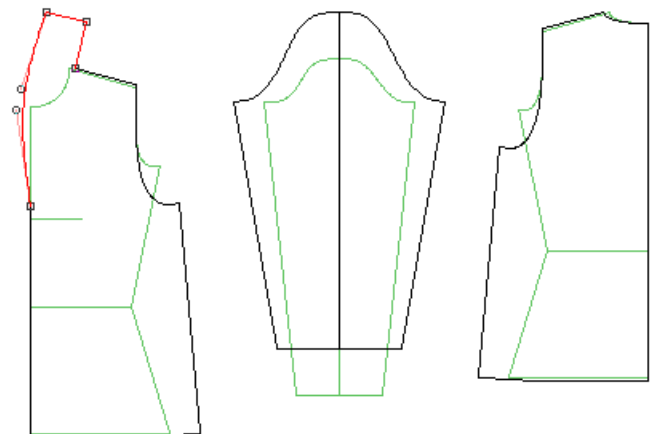
Neck Group: Collar-Style
Neck Style: Foldback Notched 1



Neck Group: Collar-Style
Neck Style: Foldback Notched 2

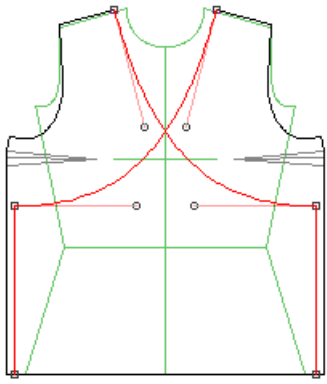


Neck Group: Collar-Style
Neck Style: Basic Shawl

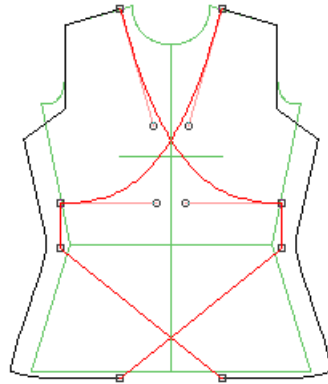


Neck Group: Collar-Style
Neck Style: Basic Shawl with Extension

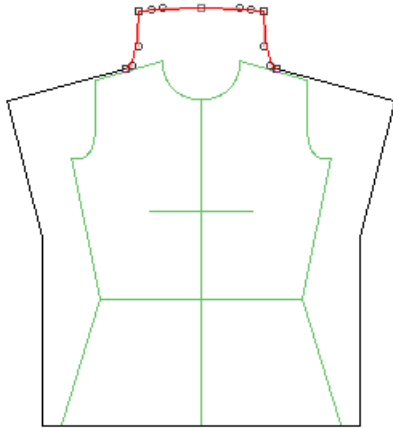
Style Set 2 Necklines, continued



Neck Group: Asymmetrical
Neck Style: Surplice 1

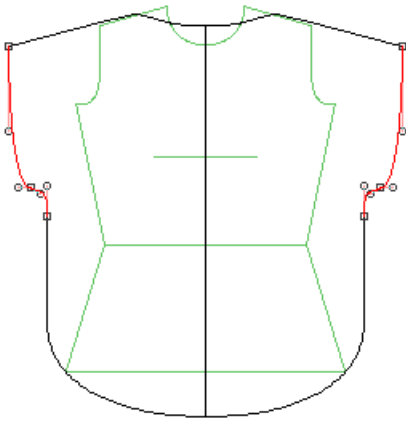


Neck Group: Asymmetrical
Neck Style: Angled

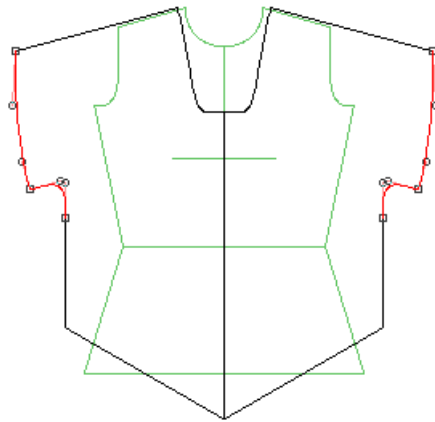


Neck Group: Specialty
Neck Style: Tall Wide Finnel

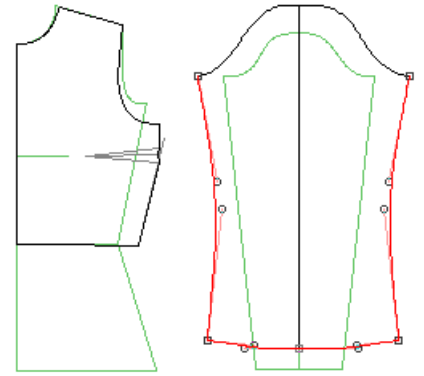
Style Set 2 Sleeves/Armhole



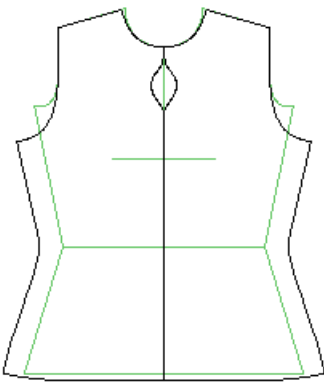
Sleeve Group: Cap
Cap Style: Curve 1



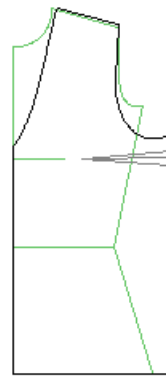
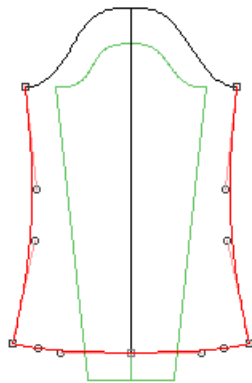
Sleeve Group: Cap
Cap Style: Curve 2



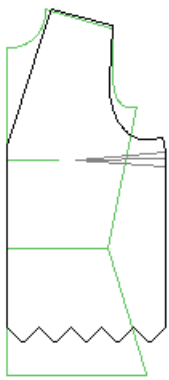
Sleeve Group: Separate
Sleeve Shape: Bell Slim



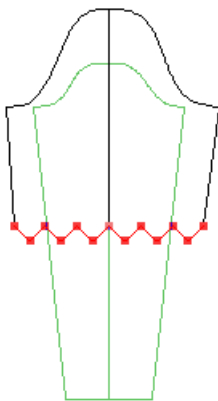
Sleeve Group: Separate
Sleeve Style: Bell



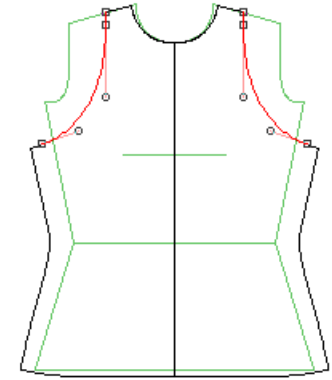
Sleeve Group: Separate
Sleeve Style: Puffed



Sleeve Group: Separate
Sleeve Shape: Straighter Angle-Scallop



Sleeve Group: Separate
Sleeve Shape: Straighter Curve-Scallop

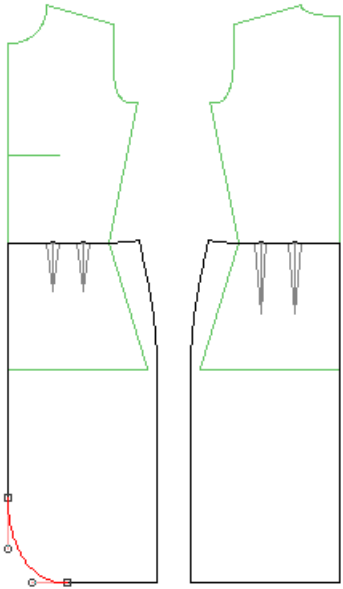


Sleeve Group: Sleeveless
Armhole: Halter

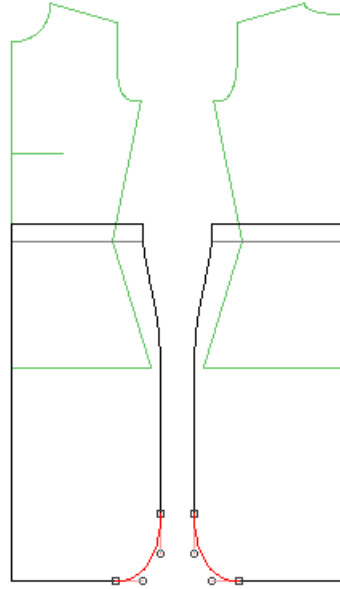
Note: There is a tapered version of both Scallop Sleeves.

Style Set 2 Skirts

Skirt Group: Straight

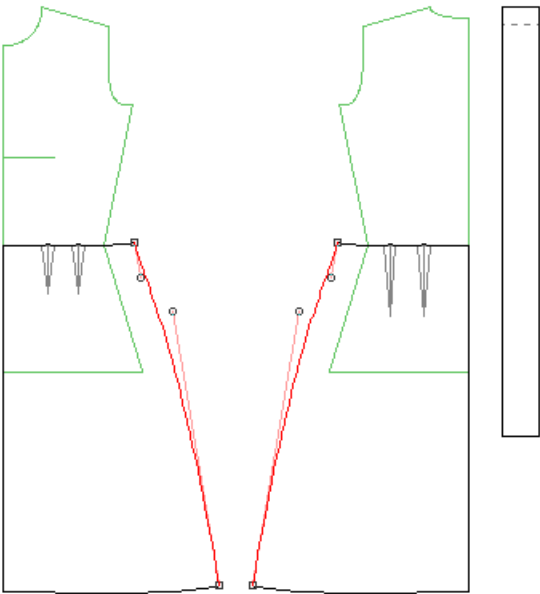


Skirt Group: Straight:
Skirt Style: Center Round Hem

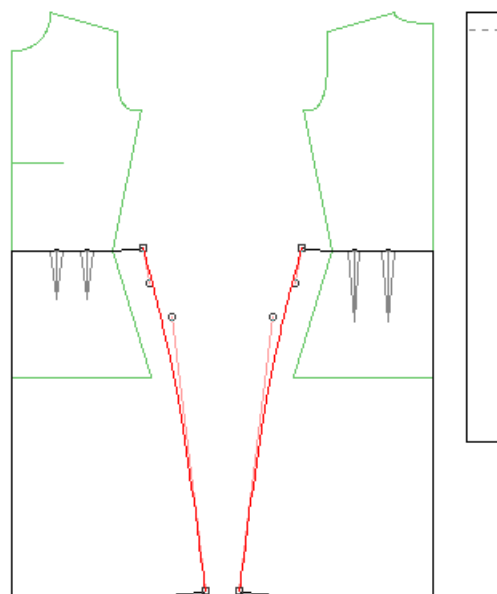


Skirt Group: Straight:
Skirt Style: Side Round Hem

Skirt Group: A-line



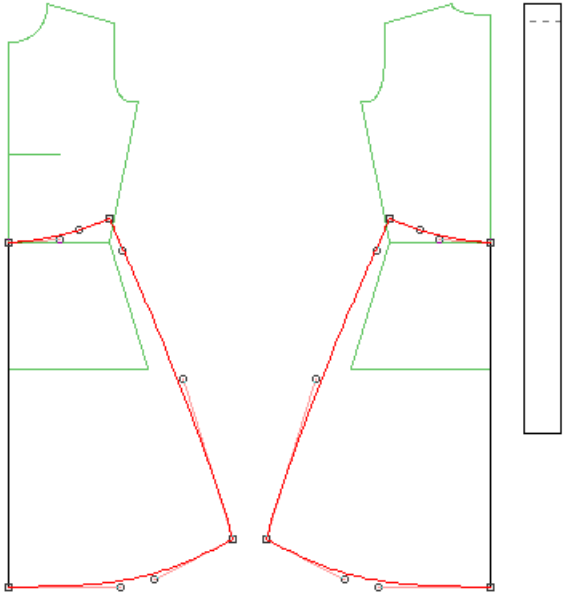
Skirt Group: A-line
Skirt Style: Standard Plus



Skirt Group: A-line
Skirt Style: Wide

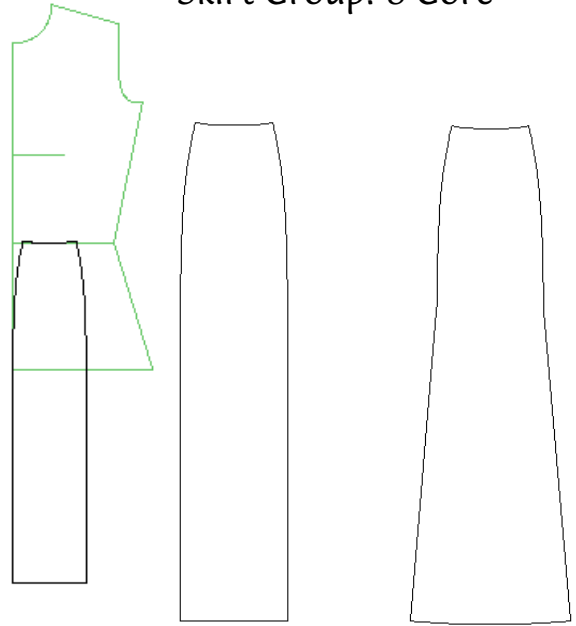
Style Set 2

Skirt Group: Flared



Skirt Group: Flared
Skirt Style: Standard

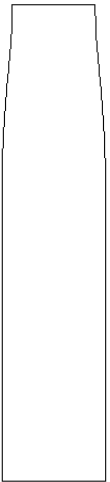
Skirt Group: 8-Gore



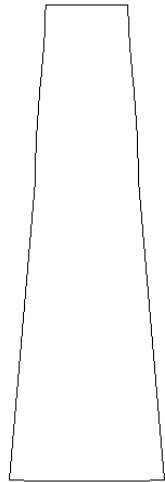
Skirt Group: 8-Gore
Skirt Style: Fitted

Skirt Group: 8-Gore
Skirt Style: Fitted
and Flared

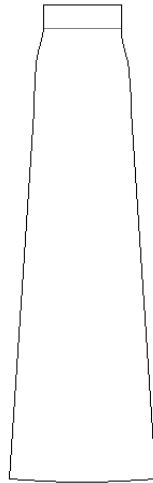
Skirt Group: 8-Gore



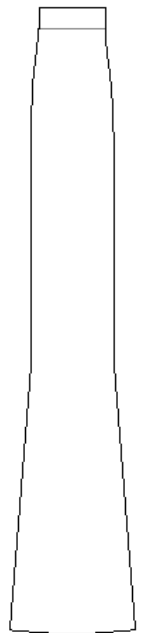
Skirt Group: 8-Gore
Skirt Style: Gather-Waist
Straight



Skirt Group: 8-Gore
Skirt Style: Gather-Waist
Flare

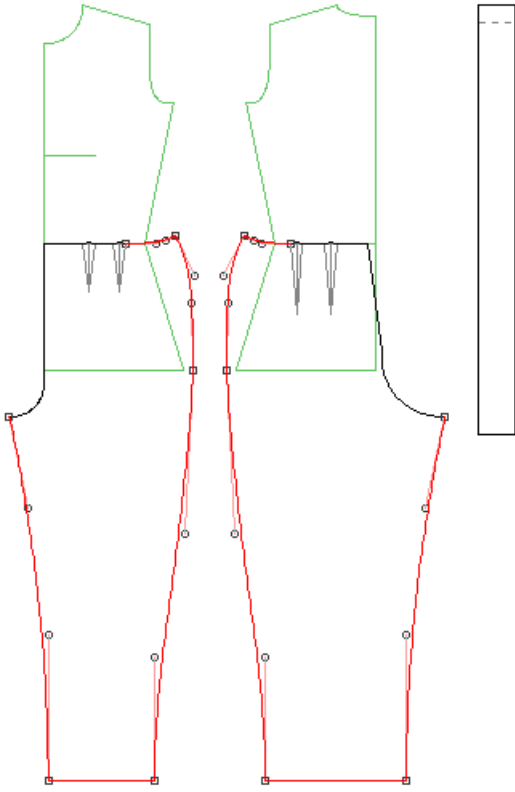


Skirt Group: 8-Gore
Skirt Style: Gather-Waist
Flare 2

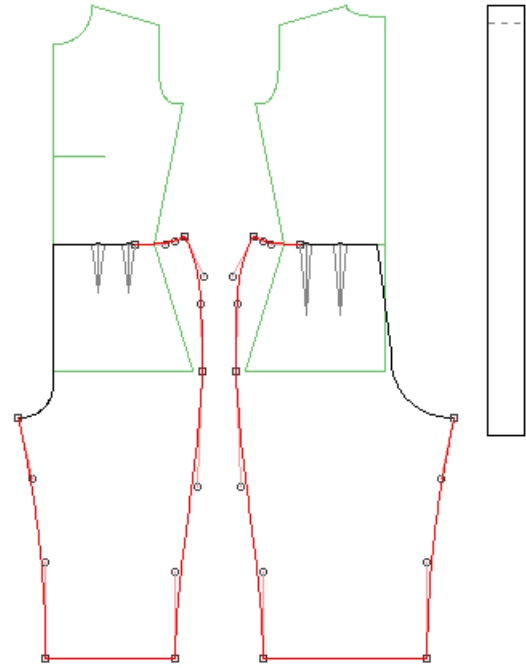


Skirt Group: 8-Gore
Skirt Style: Gather-Waist
Trumpet

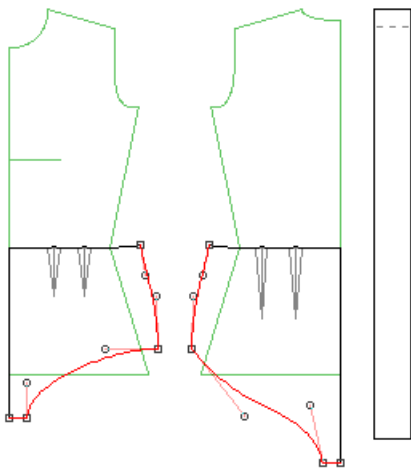
Pants



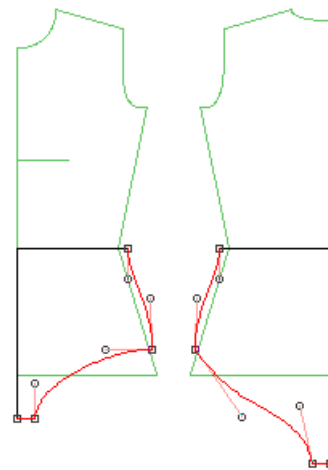
Pants Group: Generic Template
Pants Style: Curved Seams



Pants Group: Generic Template
Pants Style: Capri



Pants Group: Generic Template
Pants Style: Underwear 1



Pants Group: Generic Template
Pants Style: Underwear 2